

MODIFICATION RECOMMENDED –
CORRECTS MANUFACTURING OR DESIGN DEFECTS

E7907A-03

S E R V I C E N O T E

Supersedes:
None

E7907A 2-Port OC-3c/12c ATM/POS Routing Test Card

Serial Numbers: [0000A00000 / 9999Z99999]

**Sometimes E7907A fails to power up.
Applies to any units not modified to A10 indicated by the label on the main
PCA as shown in Figure 1 and Figure 2.**

To Be Performed By: Agilent-Qualified Personnel

Parts Required:

P/N	Description	Qty.
E7907-00026	Upgrade Kit	1

ADMINISTRATIVE INFORMATION

SERVICE NOTE CLASSIFICATION:			
MODIFICATION RECOMMENDED			
ACTION CATEGORY:	<input type="checkbox"/> IMMEDIATELY <input type="checkbox"/> ON SPECIFIED FAILURE <input checked="" type="checkbox"/> AGREEABLE TIME	STANDARDS: LABOR: 2.0 Hours	
LOCATION CATEGORY:	<input type="checkbox"/> CUSTOMER INSTALLABLE <input type="checkbox"/> ON-SITE <input checked="" type="checkbox"/> SERVICE CENTER	SERVICE INVENTORY: <input type="checkbox"/> RETURN <input type="checkbox"/> SCRAP <input checked="" type="checkbox"/> SEE TEXT	USED PARTS: <input type="checkbox"/> RETURN <input type="checkbox"/> SCRAP <input checked="" type="checkbox"/> SEE TEXT
AVAILABILITY:	PRODUCT'S SUPPORT LIFE	AGILENT RESPONSIBLE UNTIL: Until discontinuance	
AUTHOR: SW PRODUCT LINE: 2M			
ADDITIONAL INFORMATION:			

© AGILENT TECHNOLOGIES, INC. 2002
PRINTED IN Australia.



November 9, 2002

Situation:

The E7907A is a “hot swappable” Test Card for the RouterTester 900 4-Slot Chassis (E7900A). There are two possible configurations where the E7907A Test Card sometimes fails to power up, they are:

1. The E7907A Test Card is inserted into the RouterTester 900 4-Slot Chassis (E7900A) and the Chassis is powered up.
2. The RouterTester 900 4-Slot Chassis (E7900A) is already powered up and the E7907A Test Card is inserted.

The failure of the E7907A Test Card to power up is detected by the absence of any LED activity on the front panel of the Test Card. Alternatively, in an open RouterTester 900 4-Slot Chassis (E7900A) the power supply LED indicators (located at the rear left of the E7907A Test Card) fail to light when the Chassis is powered up, refer to Figure 1 on page 3.

Solution/Action:

1. Remove the E7907A Test Card from the E7900A Chassis.
2. Determine the current revision of the E7907A main PCA as follows (see Figure 1 below):
 - If a sticker is found on the E7907A main PCA indicating “Modified to A10” or “Modified A10”, no further work is required. Do not confuse with a potentially similar sticker on the CPU PCA.
 - If the E7907A main PCA barcode sticker indicates A10, no further work is required. Refer to Figure 2 below where the barcode sticker indicates PCA revision A09. In the absence of a “Modified to A10” sticker, the modification will be required.
 - The E7907A main PCA barcode sticker is generally located near U12, however on earlier versions of the PCA this sticker was randomly positioned on either side of the PCA by the Contract Manufacturer.
 - Do Not confuse the barcode sticker on the CPU PCA with that of the main E7907A PCA sticker.

Figure 1 - Identification

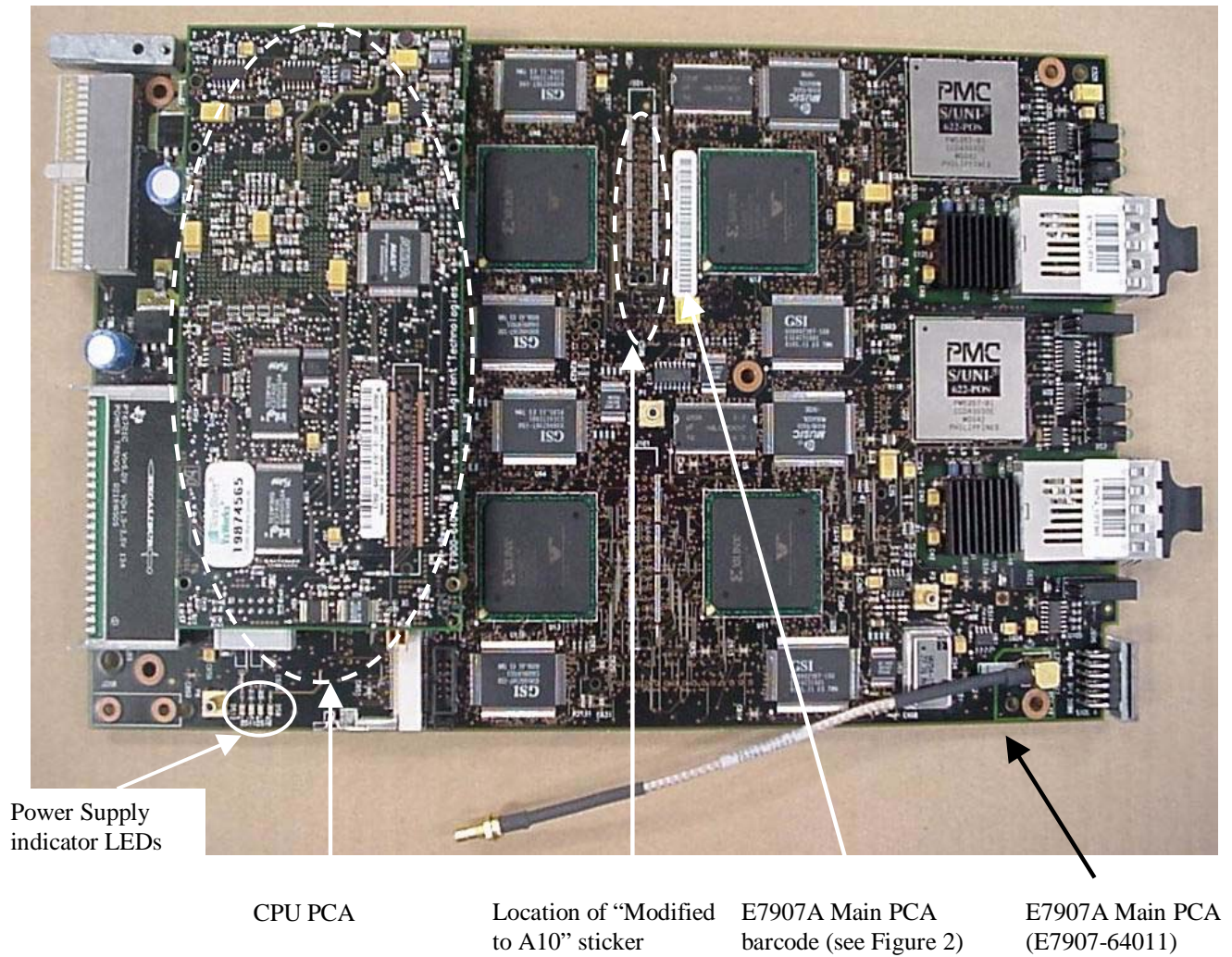


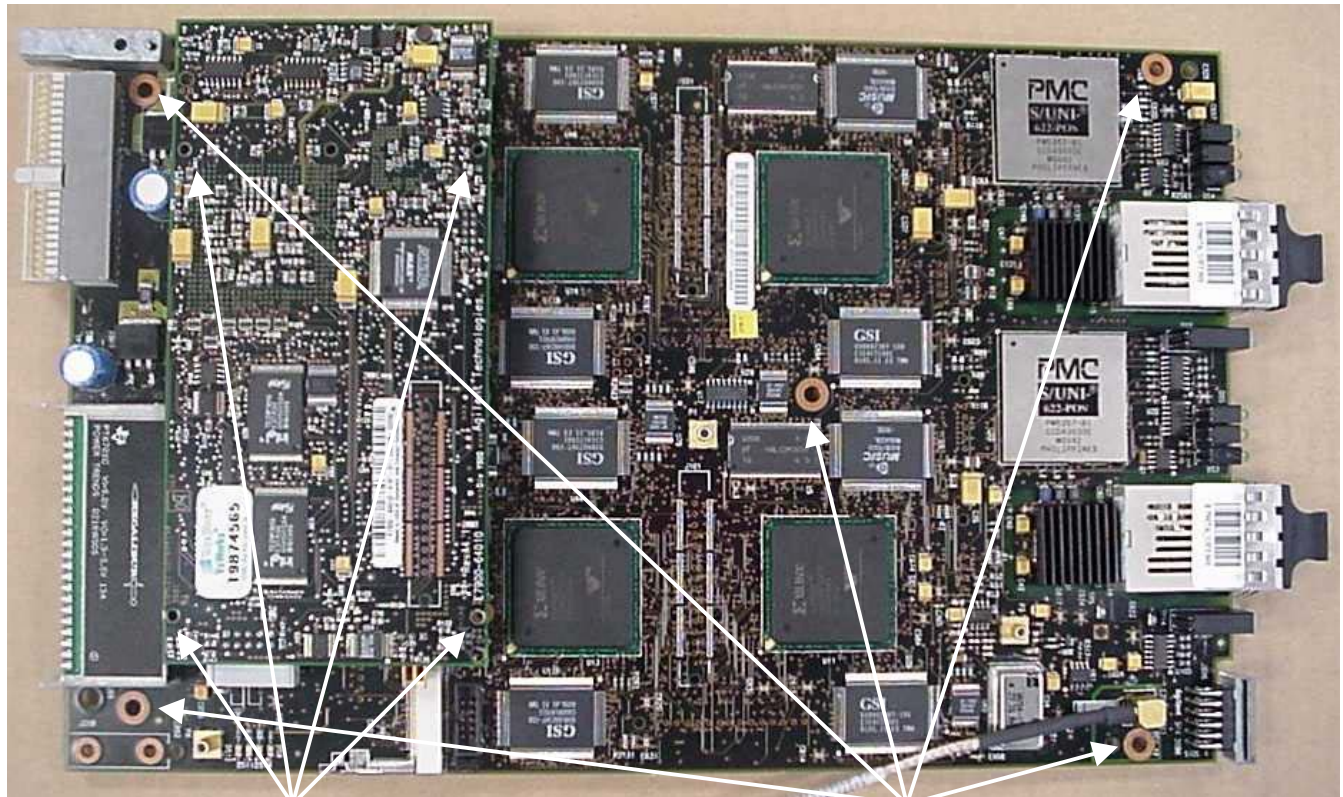
Figure 2 - E7907A PCA identification Barcode



PCA Modification / Revision number

Modification Action Required:

3. Remove the retaining nut of the SMB connector on the E7907A Test Card front panel and pull the cable clear.
4. Remove the four retaining screws of the CPU PCA and carefully remove the PCA from the main E7907A Test Card PCA, refer to Figure 3 below
5. Remove the six retaining screws of the main E7907A Test Card PCA, refer to Figure 3 below. Slightly raise the rear of the PCA so that the standoff's are clear of the underside of PCA to ensure that no surface mount components are knocked off the PCA and slowly pull the PCA optics modules clear of the front panel.

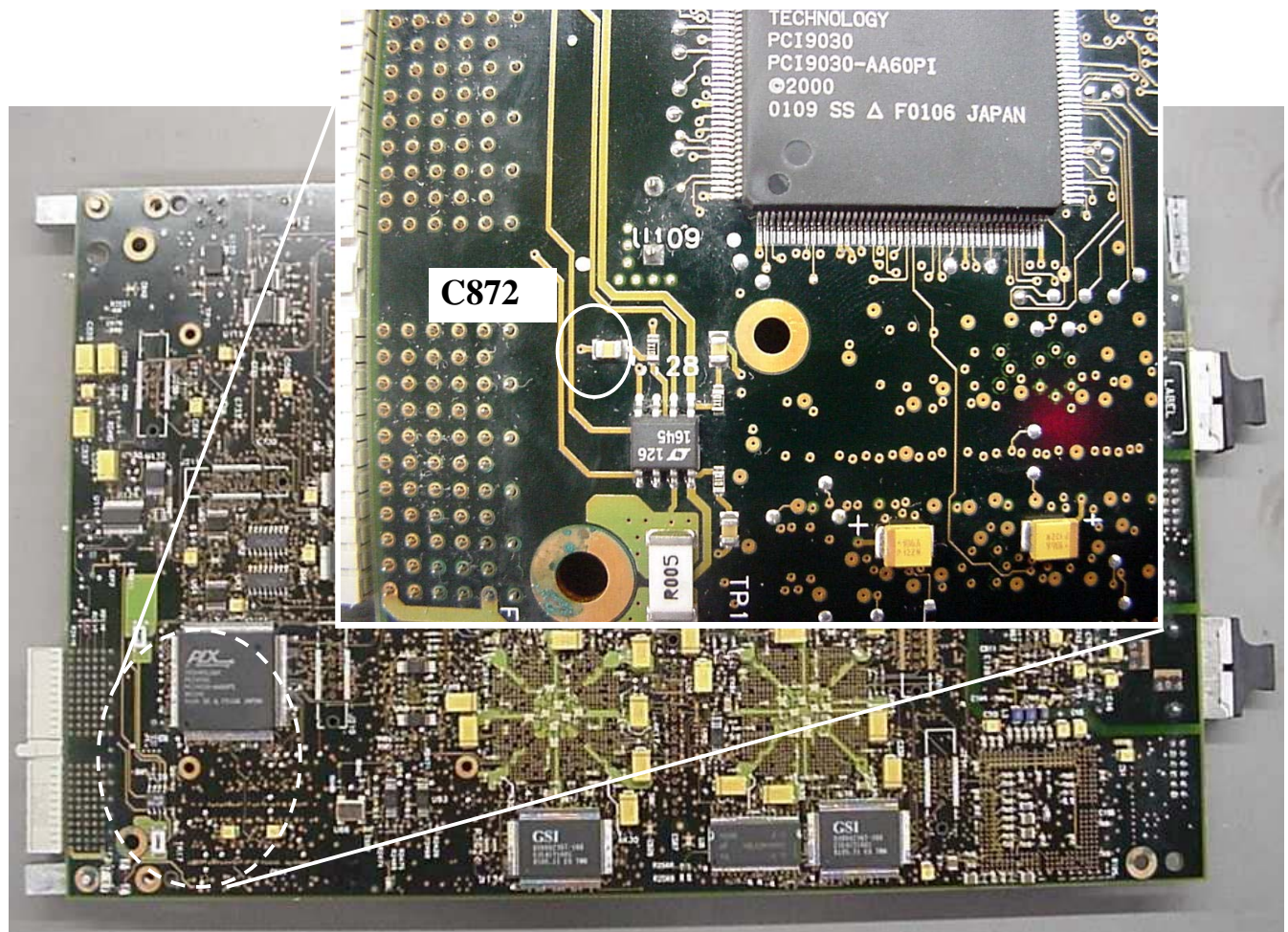
Figure 3 - Retaining Screw Positions

CPU PCA retaining screws

E7907A Test Card PCA retaining screws

Note: The sixth E7907A Test Card PCA retaining screw, location not shown above, is positioned in the center of the PCA directly under the leading edge (closer to the front panel) of the CPU PCA.

6. The surface mount capacitor (C872) to be replaced can be located by referring to Figure 4 below.

Figure 4 - Capacitor Identification for Replacement

7. Carefully remove C872 as identified in Figure 4 above. This part can be scrapped.
8. Carefully position and solder the new P/N 0160-7409, a 0.0068uF capacitor in place.
9. Carefully feed the two optical transceivers through the front panel, while holding the rear of the PCA clear of the metalwork standoff's to ensure no surface mount parts are dislodged.
10. Replace and retighten the six retaining screws.
11. Align the CPU PCA correctly with three connectors and firmly push down to make a solid fitting.
12. Replace and retighten the four retaining screws.
13. Feed the cable connector fitting through the front panel and retighten the retaining nut of the SMB connector.
14. Place a "Modified A10" sticker P/N E7907-00025 close to the E7907A Test Card PCA barcode, refer to Figure 1 on page 3 above for sticker location guide.

15. Insert the E7907A TestCard into slot number one (refer to the E7900A service manual, figure titled Chassis Front View / Slot Numbering) of an E7900A chassis (with the lid off) and power up.

Note: The E7900A RouterTester 900 Four Slot Chassis Service Manual can be found on the Advanced Networks Division web site at the following address: <http://and.aus.agilent.com/field/postsales/ip-optical/hardware.htm>.

16. Check that the E7907A TestCard power rail indication LEDs are all lit. Refer to Figure 1 on page 3 for their location on the main PCA. If any of these LEDs fail to light, re check the capacitor solder joints.
17. Check that the E7907A TestCard has correctly numbered up (refer to the Built In Self Test section of the E7900A service manual for further information).
18. Execute the Automated diagnostics section of the E7900A service manual with the E7907A TestCard in slot number one of the E7900A chassis to verify that operation of the E7907A TestCard.
19. End of process.